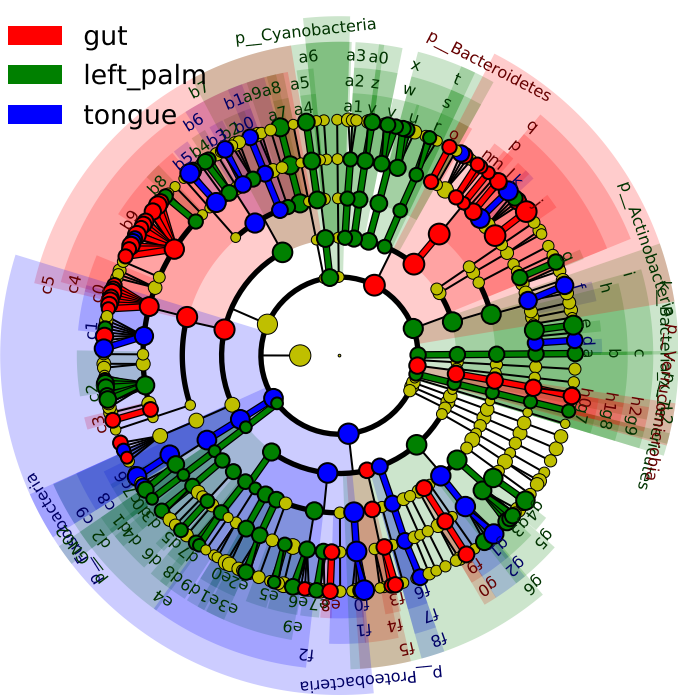


Cladogram



█ gut
█ left_palm
█ tongue

- █ a: k_Bacteria_x_L5
- █ b: k_Bacteria_x_L4
- █ c: k_Bacteria_x_L3
- █ d: f_Actinomycetales
- █ e: f_Corynebacteriac
- █ f: f_Micrococcaceae
- █ g: f_Propionibacteria
- █ h: o_Actinomycetales
- █ i: c_Actinobacteria
- █ j: f_Bacteroidaceae
- █ k: f_Prevotellaceae
- █ l: f_Rikenellaceae
- █ m: f_Barnesiellaceae
- █ n: f_Odoribacteraceae
- █ o: o_Bacteroidales_x
- █ p: o_Bacteroidales
- █ q: c_Bacteroidia
- █ r: f_Cytophagaceae
- █ s: o_Cytophagales
- █ t: c_Cytophagia
- █ u: f_Flavobacteriaceae
- █ v: f_Weeksellaceae
- █ w: o_Flavobacteriales
- █ x: c_Flavobacteriia
- █ y: f_Sphingobacteriia
- █ z: o_Sphingobacteriia
- █ a0: c_Sphingobacteriia
- █ a1: f_Chitinophagaceae
- █ a2: o_Saprosirales
- █ a3: c_Saprosirales
- █ a4: o_Streptophyta_f
- █ a5: o_Streptophyta
- █ a6: c_Chloroplast
- █ a7: c Bacilli x L5